



2006 SPRINTER

STANDING TALL

What is Sprinter? It's your work week, your high mileage long haul companion and your most reliable partner on the job.

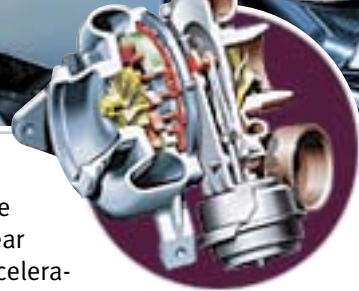
Check out the bold look and powerful performance of Dodge Sprinter.

- Interior and Exterior Features
- Color Options
- Dimensions and Capacities



POWER AND TORQUE

Turbocharging the 2.7-liter CDI engine delivers strong acceleration peaks near 4,000 rpm, giving you on-demand acceleration coupled with noteworthy fuel economy. The engine also generates 154 horsepower at 3,800 rpm and 243 lb-ft of torque at 1,600 to 2,400 rpm.



HIGH ROOF

Sprinter has an available high-roof option, providing a very comfortable 73 inches of walk-through height (nearly 20 inches more than the nearest competition). Accessibility to the interior is easy thanks to available rear doors that open a full 270 degrees (the widest-opening doors in its class) on 140-inch and 158-inch wheelbase models—and stay open with magnets mounted to the exterior panels.



**Remember to properly secure all cargo.*

TOWING/HAULING



Aside from towing up to 5,000 pounds when properly equipped, Sprinter has:

- Interior cubic volume of 473 cubic feet (Sprinter Cargo Van)
- Payload capacities of up to 4,824 pounds for Cargo Van and 3,893 pounds for Passenger Van

VERSATILITY THAT FITS YOUR BUSINESS



As the most versatile commercial van on the market, and in three distinctive models – Cargo Van, Passenger Van, and Chassis Cab – Sprinter offers multiple advantages: 118-, 140-, and 158-inch wheelbases, to support a wide array of platforms. Two roof heights, including the available 73-inch roof, to offer exceptional interior clearance.



OIL CHANGE INTERVAL

Sprinter's common rail direct injection (CDI) turbodiesel engine is extremely efficient in many ways to save you money. The standard 10,000-mile oil change interval under normal driving conditions means Sprinter is not only easy on lubricants, it's easy on your wallet, too.

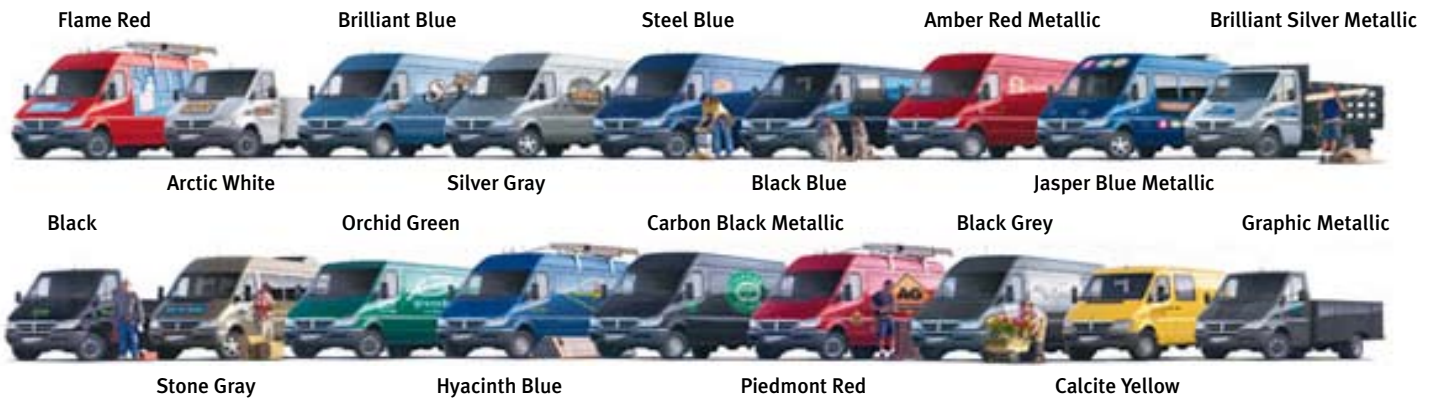
MAINTENANCE INTERVALS

Nothing can match Sprinter's available ASSYST maintenance monitoring system. This technology is so refined, it can stretch the already impressive 10,000-mile standard oil-change interval up to an incredible 20,000 miles. And with Dodge's 3-year/36,000-mile basic limited warranty† and 5-year/100,000-mile diesel engine limited warranty‡, you can be confident that Sprinter will be there for the long haul.

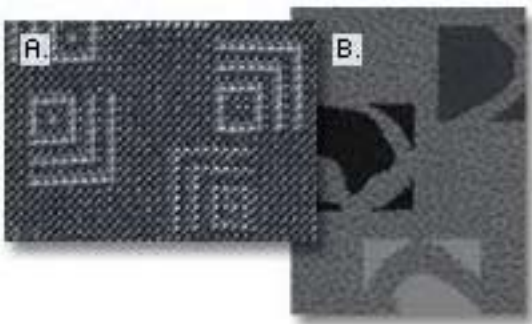
† See your dealer for complete details and a copy of this 3/36 basic limited warranty. Excludes normal maintenance and wear items.

‡ See your dealer for a copy of this 5/100 diesel engine limited warranty on specified engine components

AVAILABLE EXTERIOR COLORS

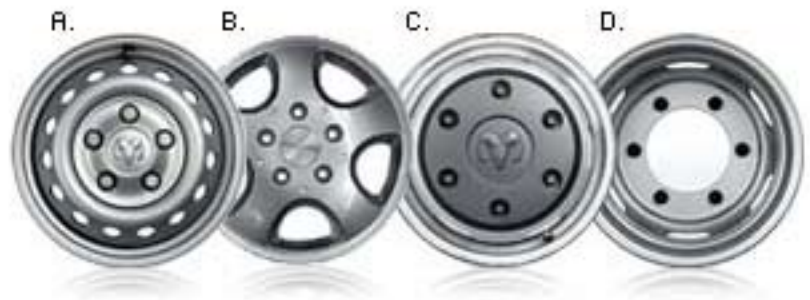


FABRIC & TRIM



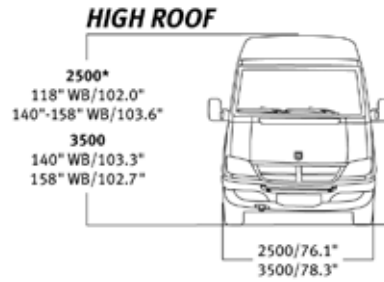
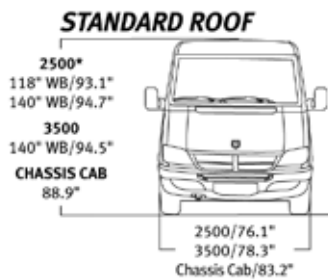
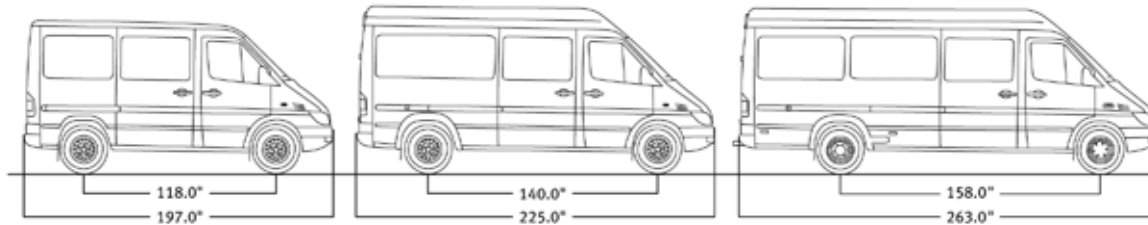
- A. Santos cloth in Gray, standard on all models
- B. Carat cloth in Gray, optional on Passenger Van

WHEELS



- A. 15"x6" Steel Wheel. Standard on 118"-wheelbase 2500 models
 16"x6" Steel Wheel. Standard on 140"- and 158"-wheel base 2500 models
- B. 16"x6" Aluminum Wheel. Available on 140"- and 158"-wheelbase 2500 Cargo and Passenger Van models
- C. 15"x5" Steel Wheel. Standard on 3500 Cargo Van models (front only)
 16"x6" Steel Wheel. Standard on 3500 Chassis Cab models (front only)
- D. 15"x5" Steel Wheel. Standard on 3500 Cargo Van models (rear only)
 16"x6" Steel Wheel. Standard on 3500 Chassis Cab models (rear only)

DIMENSIONS AND CAPACITIES



MODEL	CHASSIS CAB		CARGO VAN							
	3500		2500				3500			
	STANDARD ROOF		STANDARD ROOF		HIGH ROOF		STD ROOF		HIGH ROOF	
ROOF VERSION										
WHEELBASE	140"	158"	118"	140"	118"	140"	158"	140"	140"	158"
CURB WEIGHT (LB)	4,424	4,535	4,600	4,935	4,648	4,990	5,242	5,166	5,221	5,459
GVWR (LB)	10,200	10,200	8,550	8,550	8,550	8,550	8,550	9,990	9,990	9,990

DIMENSIONS OF LOAD VOLUMES

LENGTH (IN)	—	—	99	128.5	99	128.5	165.9	128.5	128.5	165.9
WIDTH (IN)	—	—	68.3	68.3	68.3	68.3	68.3	68.3	68.3	68.3
HEIGHT (IN)	—	—	64.2	64.2	73	73	73	64.2	73	73
LOAD AREA (CU FT)	—	—	247	321	286	367	473	321	367	473
MAXIMUM PAYLOAD (LB)	—	—	3,950	3,615	3,902	3,560	3,308	4,824	4,769	4,531

MODEL	PASSENGER VAN				
	2500				
	STANDARD ROOF		HIGH ROOF		
ROOF VERSION					
WHEELBASE	118"	140"	118"	140"	158"
CURB WEIGHT (LB)	4,657	4,999	4,706	5,058	5,305
GVWR (LB)	8,550	8,550	8,550	8,550	8,550
LENGTH (IN)	99	128.5	99	128.5	165.9
WIDTH (IN)	68.3	68.3	68.3	68.3	68.3
HEIGHT (IN)	64.2	64.2	73	73	73
LOAD AREA (CU FT)	—	—	—	—	—
MAXIMUM PAYLOAD (LB)	3,681	3,221	3,626	3,154	2,846



SPRINTER BUYER'S GUIDE

	MODEL	CHASSIS CAB		CARGO VAN						PASSENGER VAN						
		3500		2500			3500			2500						
		STANDARD ROOF		STANDARD ROOF	HIGH ROOF		STD ROOF	HIGH ROOF		STANDARD ROOF	HIGH ROOF					
WHEELBASE	140"	158"	118"	140"	118"	140"	158"	140"	140"	158"	118"	140"	118"	140"	158"	
ENTERTAINMENT SYSTEMS																
RADIO — AM/FM cassette		•	•	•	•	•	•	•	•	•	•	•	•	•	•	•
— AM/FM CD player		0	0	0	0	0	0	0	0	0	0	0	0	0	0	0
RADIO PREP GROUP — Includes 12V wiring for aftermarket head units and 2 speakers		0	0	0	0	0	0	0	0	0	0	0	0	0	0	0
SPEAKERS — 2		•	•	•	•	•	•	•	•	•	•	•	•	•	•	•
— 4												0		0	0	
INTERIOR FEATURES																
AIR CONDITIONING — With auto temp control		•	•	•	•	•	•	•	•	•	•	•	•	•	•	•
ASHTRAY — Rear												•	•	•	•	•
ASSIST HANDLE — Left rear (included with Cargo Groups I and III)				0/P	0/P	0/P	0/P	0/P	0/P	0/P	0/P					
— Right rear (included with Cargo Groups I and III)				0/P	0/P	0/P	0/P	0/P	0/P	0/P	0/P					
— Right sliding door												•	•	•	•	•
BODY ELECTRICAL PREP		0	0													
CARGO PARTITION				0	0	0	0	0	0	0	0					
CARGO PARTITION PROVISIONS				0	0	0	0	0	0	0	0					
CARGO PARTITION WITH SLIDING DOOR — Includes delete passenger air bag and replaces passenger seat and seat riser with jumpseat						0	0	0		0	0					
CARGO PARTITION WITH SLIDING WINDOW				0	0	0	0	0	0	0	0					
CARGO PARTITION WITH WINDOW				0	0	0	0	0	0	0	0					
CARGO TIE-DOWN RAILS — N/A with left-side sliding door or washable cargo walls				0	0	0	0	0	0	0	0					
CELL PHONE PREP		0	0	0	0	0	0	0	0	0	0	0	0	0	0	0
CUP HOLDERS — Instrument panel, center		•	•	•	•	•	•	•	•	•	•	•	•	•	•	•
— Rear												•	•	•	•	•
DELETE WOOD FLOOR				0	0	0	0	0	0	0	0					
FLOOR COVERING — Rubber, front		•	•	•	•	•	•	•	•	•	•	•	•	•	•	•
— Rubber, rear												•	•	•	•	•
GAUGE — Outside temperature		•	•	•	•	•	•	•	•	•	•	•	•	•	•	•
HEATER REAR, AUXILIARY — Requires Auxiliary Front Heating Group and rear insulation				0	0	0	0	0	0	0	0	0	0	0	0	0
INSULATION — Front (requires rear wall trim on Chassis Cab)		0	0	0	0	0	0	0	0	0	0	0	0	0	0	0
— Rear (requires Cargo Group I or Cargo Group III or 1st rear bench seat, 3-passenger)				0	0	0	0	0	0	0	0	P	P	P	P	P
NO REAR SEAT PACKAGE				•	•	•	•	•	•	•	•					
NO REARVIEW MIRROR		•	•	•	•	•	•	•	•	•	•					
POWER OUTLET — 12V mounted in IP		•	•	•	•	•	•	•	•	•	•	•	•	•	•	•
— 12V mounted on driver's seat base		0	0	0	0	0	0	0	0	0	0	0	0	0	0	0
SPEED CONTROL		0	0	0	0	0	0	0	0	0	0	0	0	0	0	0
TRIM — Rear wall		0	0													
MECHANICAL																
ALTERNATOR — 90-amp		•	•	•	•	•	•	•	•	•	•	•	•	•	•	•
— 150-amp (included in Cooling Group)		0	0	0	0	0	0	0	0	0	0	0	0/P	0	0/P	0/P
— 200-amp		0	0	0	0	0	0	0	0	0	0	0	0	0	0	0
— 115-amp (N/A with Cooling Group)		0	0	0	0	0	0	0	0	0	0	0	0	0	0	0
AUXILIARY BATTERY — N/A with Comfort Seating Group on Chassis Cab models		0	0	0	0	0	0	0	0	0	0	0	0	0	0	0
AUXILIARY BELT DRIVE — N/A with Cooling Group		0	0	0	0	0	0	0	0	0	0	0	0	0	0	0
AUXILIARY HEAT EXCHANGER — Requires Auxiliary Front Heating Group; N/A with left-side sliding door on Cargo Van				0	0	0	0	0	0	0	0	0	0	0	0	0
AUXILIARY TRANSMISSION OIL COOLER		•	•	•	•	•	•	•	•	•	•	•	•	•	•	•
AXLE RATIO — 3.72		•	•	•	•	•	•	•	•	•	•	•	•	•	•	•
— 4.11		0	0	0	0	0	0	0	0	0	0	0	0	0	0	0
BATTERY — 100-amp		•	•	•	•	•	•	•	•	•	•	•	•	•	•	•
ENGINE — Premium 2.7L I-5 Turbo Diesel		•	•	•	•	•	•	•	•	•	•	•	•	•	•	•
FUEL TANK — 26.4-gallon		•	•	•	•	•	•	•	•	•	•	•	•	•	•	•
HIGH IDLE FUNCTION		0	0	0	0	0	0	0	0	0	0	0	0	0	0	0

• = Included. P = Available within package noted in parentheses. 0 = Optional. N/A = Not available.



MODEL	CHASSIS CAB		CARGO VAN									PASSENGER VAN				
	3500		2500						3500			2500				
	STANDARD ROOF		STANDARD ROOF		HIGH ROOF				STD ROOF	HIGH ROOF		STANDARD ROOF		HIGH ROOF		
WHEELBASE	140"	158"	118"	140"	118"	140"	158"	140"	140"	158"	118"	140"	118"	140"	158"	
MECHANICAL (continued)																
STABILIZER BAR — Front			•	•	•	•	•	•	•	•	•	•	•	•	•	•
— Rear	•	•	•	•	•	•	•	•	•	•	•	•	•	•	•	•
WIRING — Taillamp extension	0	0														
PACKAGES																
ACCESSORY GROUP — Includes front-passenger assist handle and front reading/map lamp	0	0	0	0	0	0	0	0	0	0	0	0	0	0	0	0
AUXILIARY FRONT HEATING GROUP — Includes front auxiliary heater with timer (requires front insulation)	0	0	0	0	0	0	0	0	0	0	0	0	0	0	0	0
CARGO GROUP I — Includes washable cargo walls, left and right rear assist handles			0	0	0	0	0	0	0	0						
CARGO GROUP III — Includes half-laminated wood panels, left and right rear assist handles			0	0	0	0	0	0	0	0						
COMFORT SEATING GROUP — Includes luxury front bucket seats with manual lumbar adjustment	0	0	0	0	0	0	0	0	0	0						
COOLING GROUP — Includes 150-amp alternator and rear heavy-duty air conditioning												0		0	0	
MAINTENANCE GROUP — Includes ASSYST maintenance monitoring system, air filter restriction indicator, and low washer fluid warning lamp	0	0	0	0	0	0	0	0	0	0	0	0	0	0	0	0
POWER CONVENIENCE GROUP — Includes remote keyless entry, power heated mirrors, power door locks and power windows	0	0	0	0	0	0	0	0	0	0	0	0	0	0	0	0
TRAILER TOW GROUP — Includes wiring harness and 5,000-lb hitch receiver	0	0	0	0	0	0	0	0	0	0	0	0	0	0	0	0
WINDOW GROUP I — Includes rearview mirror, rear door windows with defroster			0	0	0	0	0	0	0	0						
WINDOW GROUP II — Includes rearview mirror, rear door windows with defroster and right-side sliding door fixed window			0	0	0	0	0	0	0	0						
WINDOW GROUP III — Includes rearview mirror, rear door windows with defroster, right-side sliding door fixed window, and left-side front fixed window			0	0	0	0	0	0	0	0						
WINDOW GROUP IV — Includes rearview mirror, rear door windows with defroster, right-side sliding door fixed window, left-side front fixed window, and center left- and right-side fixed windows (158" - WB models include rear left- and right-side fixed windows)			0	0	0	0	0	0	0	0						
SAFETY AND SECURITY																
AIR BAGS ⁽²⁾ — Driver/Front Passenger	•	•	•	•	•	•	•	•	•	•	•	•	•	•	•	•
BRACKET — Warning triangle	•	•	•	•	•	•	•	•	•	•	•	•	•	•	•	•
BRAKES — 4-wheel disc antilock	•	•	•	•	•	•	•	•	•	•	•	•	•	•	•	•
DAYTIME RUNNING LAMPS — Headlamps	0	0	0	0	0	0	0	0	0	0	0	0	0	0	0	0
DELETE FIRE EXTINGUISHER	0	0	0	0	0	0	0	0	0	0	0	0	0	0	0	0
DELETE WARNING TRIANGLE BRACKET	0	0	0	0	0	0	0	0	0	0	0	0	0	0	0	0
ELECTRONIC STABILITY PROGRAM ⁽²⁾			•	•	•	•	•	•	•	•	•	•	•	•	•	•
FIRE EXTINGUISHER PREP	•	•	•	•	•	•	•	•	•	•	•	•	•	•	•	•
KEYS — 2 additional	0	0	0	0	0	0	0	0	0	0	0	0	0	0	0	0
PARKSENSE™ REAR PARK ASSIST SYSTEM — N/A with Trailer Tow Group			0	0	0	0	0	0	0	0	0	0	0	0	0	0
TOOL KIT	•	•	•	•	•	•	•	•	•	•	•	•	•	•	•	•
TOP SPEED LIMITATION (74-mph)	0	0	0	0	0	0	0	0	0	0	0	0	0	0	0	0
TRACTION CONTROL	•	•	•	•	•	•	•	•	•	•	•	•	•	•	•	•
SEATING AND TRIM																
ARMREST — Driver's and front-passenger seats	•	•	•	•	•	•	•	•	•	•	•	•	•	•	•	•
— Right and left, rear			0	0	0	0	0	0	0	0	0	0	0	0	0	0
HEAD RESTRAINT — Driver and all passengers	•	•	•	•	•	•	•	•	•	•	•	•	•	•	•	•
SEAT — 1st rear bench, 3-passenger (Crew Van Option for 2500 Cargo Van models includes Passenger Van floor, half-fiberboard cargo panels, paneling under roof and on window pillars; requires Window Group IV)			0	0	0	0	0				•	•	•	•	•	•
— 2nd rear bench, 2-passenger												•		•		•



MODEL	CHASSIS CAB		CARGO VAN									PASSENGER VAN				
	3500		2500						3500			2500				
	STANDARD ROOF		STANDARD ROOF		HIGH ROOF				STD ROOF	HIGH ROOF		STANDARD ROOF		HIGH ROOF		
ROOF VERSION	140"	158"	118"	140"	118"	140"	158"	140"	140"	158"	118"	140"	118"	140"	158"	
WHEELBASE	140"	158"	118"	140"	118"	140"	158"	140"	140"	158"	118"	140"	118"	140"	158"	
SEATING AND TRIM (continued)																
— 2nd rear bench, 3-passenger																
— 3rd rear bench, 3-passenger																
— Heated, driver's	0	0	0	0	0	0	0	0	0	0	0	0	0	0	0	0
— Heated, passenger (requires heated driver's seat)	0	0	0	0	0	0	0	0	0	0	0	0	0	0	0	0
— Luxury bucket, driver's and front passenger (included with Comfort Seating Group)	0/P	0/P	0/P	0/P	0/P	0/P	0/P	0/P	0/P	0/P	P	P	P	P	P	P
SEATING — 8-passenger																
— 10-passenger																
SEATS — Cloth buckets/reclining front	•	•	•	•	•	•	•	•	•	•	•	•	•	•	•	•
STORAGE BIN — Front passenger seat	•	•	•	•	•	•	•	•	•	•	•	•	•	•	•	•
EXTERIOR FEATURES																
BRACKET — Mirror, vehicle width up to 90.5"	0	0														
— Mirror, vehicle width up to 94.5"	0	0														
DEFROSTER — Rear window (included with Window Groups I, II, III, IV; must have rear door windows)			P	P	P	P	P	P	P	P	•	•	•	•	•	•
DELETE END OF FRAME CROSSMEMBER	0	0														
DELETE RIGHT SLIDING DOOR			0	0	0	0	0	0	0	0						
DELETE TAILLAMPS	0	0														
DOOR — Left sliding			0	0	0	0	0	0	0	0						
— Right sliding			•	•	•	•	•	•	•	•	•	•	•	•	•	•
— Rear hinged			•	•	•	•	•	•	•	•	•	•	•	•	•	•
— Rear hinged (270-degree opening)																
EXHAUST PIPE — Rear extension	•	•	•	•	•	•	•	•	•	•	•	•	•	•	•	•
FASCIA — Front, gray	•	•	•	•	•	•	•	•	•	•	•	•	•	•	•	•
— Front, chrome trim	0	0	0	0	0	0	0	0	0	0	0	0	0	0	0	0
— Rear, gray			•	•	•	•	•	•	•	•	•	•	•	•	•	•
— Rear, gray w/step pad			0	0	0	0	0	0	0	0	0	0	0	0	0	0
FOG LAMPS	0	0	0	0	0	0	0	0	0	0	0	0	0	0	0	0
HEADLAMP WASHER — High-pressure (requires Maintenance Group)	0	0	0	0	0	0	0	0	0	0	0	0	0	0	0	0
HEADLAMPS — Halogen	•	•	•	•	•	•	•	•	•	•	•	•	•	•	•	•
LAMP — Center high-mounted stoplight			•	•	•	•	•	•	•	•	•	•	•	•	•	•
— Third brake prep	0	0														
— Front dome	•	•	•	•	•	•	•	•	•	•	•	•	•	•	•	•
— Rear dome																
LAMPS — Cargo compartment, sides			•	•	•	•	•	•	•	•						
— Side marker prep	0	0														
— Turn signal fender extension	0	0														
MIRRORS — Rearview (included with rear wall window and Window Groups I, II, III, IV)	P	P	P	P	P	P	P	P	P	P	•	•	•	•	•	•
— Manual	•	•	•	•	•	•	•	•	•	•	•	•	•	•	•	•
— Power, heated																
— Additional parabolic, right and left (N/A with mirror brackets)	0	0	0	0	0	0	0	0	0	0	0	0	0	0	0	0
MUD FLAPS — Front	•	•	•	•	•	•	•	•	•	•	•	•	•	•	•	•
— Rear			•	•	•	•	•	•	•	•	•	•	•	•	•	•
NO RIGHT SLIDING DOOR	•	•														
SPARE TIRE — Full-size steel wheel	•	•	•	•	•	•	•	•	•	•	•	•	•	•	•	•
STEP — Wide metal, rear				0				0	0							
SUNROOF — Manual, tilting	0	0	0	0							0	0				
TIRE — Spare, temporary mounting	•	0														
TIRE CARRIER — Underslung			•	•	•	•	•	•	•	•	•	•	•	•	•	•
TIRES — 225/70R15 BSW all-season					•								•			
— 195/70R15 BSW all-season																
— 225/75R16 BSW all-season	•	•			•								•			
TOW HOOK — Rear (N/A with Trailer Tow Group)			0	0	0	0	0	0	0	0	0	0	0	0	0	0



	MODEL	CHASSIS CAB		CARGO VAN							PASSENGER VAN					
		3500		2500			3500				2500					
		STANDARD ROOF		STANDARD ROOF		HIGH ROOF			STD ROOF		HIGH ROOF			STANDARD ROOF		HIGH ROOF
SEATING AND TRIM (continued)	WHEELBASE	140"	158"	118"	140"	118"	140"	158"	140"	140"	158"	118"	140"	118"	140"	158"
WHEELS — 15"x5" steel									•	•	•					
— 15"x6" steel				•		•						•		•		
— 16"x6" steel		•	•		•		•						•		•	•
— 16"x6" aluminum					0		0	0					0		0	0
— Dual rear		•	•						•	•	•					
— Paintable		0	0		0		0	0	0	0	0		0		0	0
— Steel, Arctic White		0	0		0		0	0								
WINDOWS — Front left-side, sliding (N/A with sunscreen glass)												0	0	0	0	0
— Front right-side, sliding (N/A with sunscreen glass)												0	0	0	0	0
— Rear wall		0	0													
— Fixed in roof (N/A with 1st rear bench, 3-passenger)				0	0	0	0	0	0	0	0					
WINDSHIELD — Insulating with band filter		•	•	•	•	•	•	•	•	•	•	•	•	•	•	•
— Heated with rain sensor (must have 150- or 200-amp alternator)		0	0	0	0	0	0	0	0	0	0	0	0	0	0	0

• = Included. P = Available within package noted in parentheses. 0 = Optional. N/A = Not available.

⁽¹⁾Always use seat belts. Sprinter Cargo Van and Chassis Cab are equipped only with front seats and should not be used to carry children 12 and under. The rear seat must be used for children 12 and under on Sprinter Passenger Van. ⁽²⁾No system, no matter how sophisticated, can repeal the laws of physics or overcome careless driving actions. Performance is limited by available traction, which snow, ice and other conditions can affect. When the ESP warning lamp in the speedometer flashes, the driver needs to use less throttle and adapt speed and driving behavior to prevailing road conditions. Always drive carefully, consistent with conditions. Please always wear your seat belt. Always check entire surroundings before backing up.